



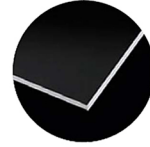
## MICROSCOPE SLIDES



### TYPES OF MICROSCOPE SLIDES

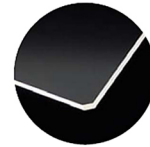
- Plain
- Frosted
- Color Frosted
- Adhesion

### CORNERS / EDGE TYPE



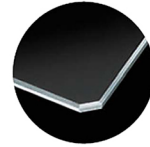
### FUNDAMENTAL STYLE

90° Ground Edge or 90° Corner



### SAFETY CORNERS

90° Ground Edge or Slightly Clipped Corners



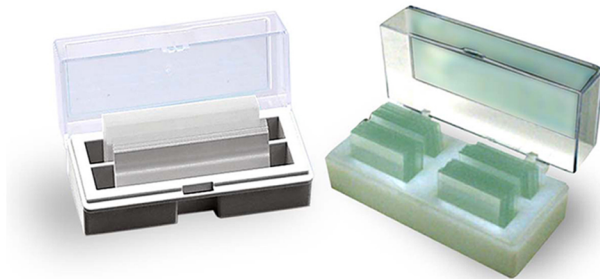
### CLIPPED CORNERS

45° Beveled (No Sharp Edges)

ITEM DESCRIPTION	PACKAGING
Plain, Cut Edges, 90°	72 pcs per box
Plain, Ground Edges, 45°	72 pcs per box
Frosted Cut Edges, 90°	72 pcs per box
Frosted, Ground Edges, 45°	72 pcs per box
Colored Frosted, Green 45°	50 pcs per box
Colored Frosted, Blue, 45°	50 pcs per box
Colored Frosted, Orange 45°	50 pcs per box
Colored Frosted, Pink, 45°	50 pcs per box
Colored Frosted, Purple, 45°	50 pcs per box
Colored Frosted, Yellow, 45°	50 pcs per box
Colored Frosted, White, 45°	50 pcs per box
Adhesive Slides, Blue, 45°	72 pcs per box

## COVER GLASS

A piece of very thin glass or plastic used to cover material on a microscope slide.



SIZE	QUANTITY
22 x 40 mm	100 pcs per box
24 x 24 mm	200 pcs per box
24 x 40 mm	100 pcs per box
24 x 40 mm	100 pcs per box
24 x 56 mm	100 pcs per box
24 x 60 mm	100 pcs per box

## IMPROVED NEUBAUER

The Neubauer chamber is a thick crystal slide with the size of a glass slide (30 x 70 mm and 4 mm thickness). In a simple counting chamber, the central area is where the cell counts are performed. The chamber has three parts: (1) the central part, where the counting grid has been set on the glass, and (2) double chambers/two counting areas that can be loaded independently.



BRANDS:

## COVER GLASS FOR IMPROVED NEUBAUER

The glass cover is placed on the top of the Neubauer chamber, covering the central area. The glass cover leaves room for the cell concentration between the bottom of the chamber and the cover itself. The chamber is designed so that the distance between the bottom of the chamber and the cover is 0.1 mm.



BRANDS: 24 x 24 mm, 0.4 mm thick

20 x 26 mm, 0.4 mm thick